



DATALEC
PRECISION INSTALLATIONS

Structured Cabling Services

datalecltd.com



Datalec delivers excellence in international data centre construction, connectivity and managed services.

**WE ARE
HIRING!**

**We are always looking for great
people to join our growing team.**

If you are interested in working at Datalec
please send your CV to: hr@datalecltd.com

ABOUT DATALEC

Datalec Precision Installations have been instrumental in delivering structured cabling projects in the data centre and technology industry since 2012. Datalec's reputation has been built on offering its client base an agile, reliable, and precise service.

With an established reputation built on quality, flexibility, and reliability Datalec constantly seeks how to better meet and exceed client expectations.

The company holds various industry certifications and accreditations. Through careful recruitment and rigorous training Datalec's critical industry qualifications and partner programs are well maintained.



OUR APPROACH

Datalec is experienced in delivering end-to-end infrastructure design, build, installation and support solutions for data centres in an increasing range of territories across the globe.

We offer all clients a flexible, bespoke design service. Through partnering with our clients we provide seamless, integrated, unified end-to-end results with a 'One Call, One Team' service. Forever in 'pursuit of perfection'. We are focused on delivering a proactive and personal service that provides agility, flexibility and adaptability for substantial data centre construction, inside and outside the white space.

Our network infrastructure specialists have a wealth of expertise in providing an extensive range of tailored cabling solutions from power, voice, data, powered fibre to security, Wi-Fi and networking in new build, refurbishment or migration scenarios.

Our partner status



Our rigorous project management and supervision **ensures solutions are implemented the first time, every time**

Business as usual, service & project teams

- Mobilised in Datalec Company Vehicles.
- Fluke and EXFO Testing Equipment.
- Splicing Equipment (conventional and ribbon).
- Self-Delivery Model.
- CNCI Technicians.
- CNIDP Designers.
- CDCDP and CTPM Qualified.

Core design & implementation ability

- Traditional Structure Cabling Solutions.
- Bespoke Secured ODF Solutions.
- IP Based Copper, Fibre, Monitoring Cabling.
- Power Fibre, Electronic Security, Wi-Fi and Networking.
- Pre-Terminated Deployment Services.
- Pre-Staging Lab Services.
- Landlords critical monitoring, cabling and connections.



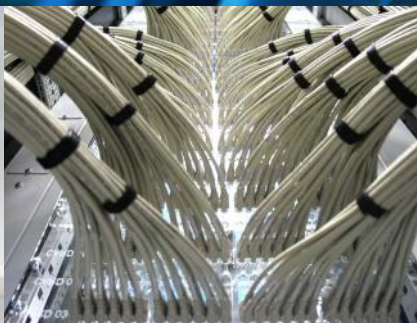
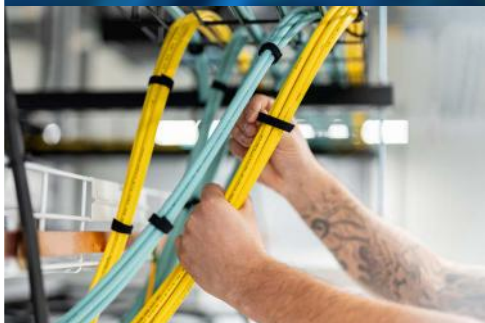
OUR IN- DEPTH PROJECT DELIVERY PROCESS

Whether it's cable inventories and audits, the testing and certification of structured cabling networks, voice and data communications equipment (including blown and ribbon fibre optics capabilities), a data migration or a complete new build data centre, we understand that what our clients want most of all - apart from excellence and value, of course - is a peace of mind.

As part of the service, our project management team prepares and delivers progress reports to all customers, providing essential visibility of details in key activities, risks, interdependencies and challenges as they relate to other workers on site.



Our clients include some of the largest data centre operators and managed service providers in the world.



Core Design & Implementation Ability

Datalec can either provide a complete Structured Cabling design from initial concept through to implementation or develop base designs to a client's requirements.

Working closely with our clients at all stages, Datalec is able to provide a solution which both fits our clients immediate and future requirements.

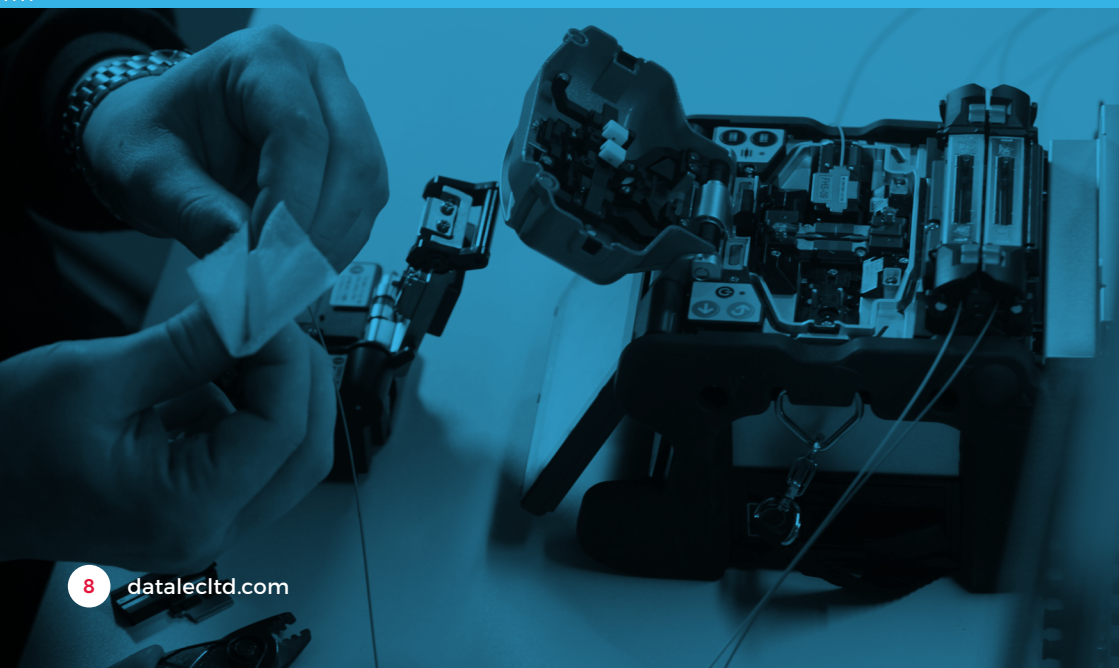
Datalec's design team come with a wealth of industry knowledge and experience and are continually keeping up-to-date with the latest Industry Standards as well as Structured Cabling Manufacturers specifications and solutions.

Pre-Term Facility

Datalec have a bespoke facility off-site, ready to pre-term at a moment's notice. This facility supports our clients in achieving their fast delivery time frames as we can complete works beforehand, enabling our clients to compact their programme. We utilise a five step process to ensure works are protected and quality is maintained to the highest standard.

Post Project Documentation

Datalec provide all our clients with post-project documentation, such as test results, as built drawings, warranty certificates, which form part of the Operation and Maintenance Manuals. It is our belief that the project is not completed until this has been achieved, as we consider the provision of such documents to be equally important as the delivery of the installation.





Pre-Construction/Scope of Work

- Scope and Design.
- RFI Responses.
- Workshops.
- SLA Deliverables.
- Bespoke Engineering Projects.
- Agreed Commissioning Plan.



Construction

- Health & Safety Management Plans.
- DPI Quality Regime throughout Life Cycle of Construction.
- CHAS Certified Contractors.
- Program Reporting against Contract SLA.



Project Procurement

- Supply Chain Management.
- Approved against Scope.
- Leverage Cost Benefits.
- Sourced Globally.
- Supply Chain Management.
- Project Managed.



Commissioning

- Completed to Commissioning Plans.
- Completed to Employer Requirements.
- Test & Inspection Certified.
- Full Certification of all Installations.
- Commissioning Management.



Commercial Management

- Change Control Management.
- Cash Flow Forecasting.
- Risk Analysis.
- Value Engineering Solutions.



Handover

- DPI Inspections and Third-Party Inspections.
- Internal sign-off completed prior to Client Handover.
- Client Sign-Off.
- Client Debrief and Feedback.
- Case Study as appropriate.

HIGHLY EXPERIENCED, FULLY QUALIFIED AND CERTIFIED

We use our own highly experienced, fully qualified, and certified designers, field technicians, and project management employees, with a combined 125+ years experience, to provide our clients with the security that all projects will be delivered in accordance with our exacting standards.

Our Fleet Includes:

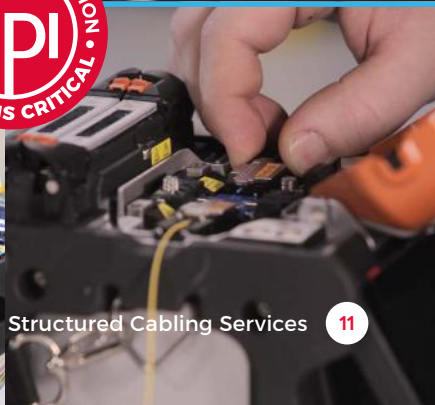
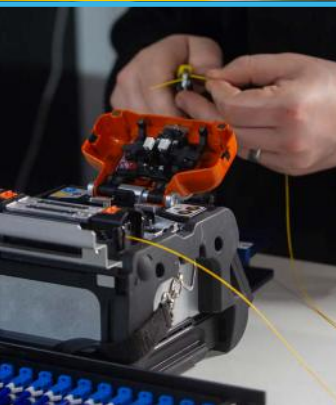
- Fluke MPO Tester.
- Fluke Versivs.
- Conventional Splicers.
- Ribbon Splicers.
- Optical Time Domain Reflectometers (OTDR).
- EXFO Testers (service engineers).

Datalec's Team Of Field Technicians

Our certified technicians offer support to customers providing expert guidance throughout the project lifecycle from initial planning to operations on-site.

- Accredited with major manufacturers.
- Experienced migration technicians.
- Field trained to supplement experience.
- Accredited CNCI Field staff.
- Accredited Technicians – Server+, Network+ status.

**Our connectivity testing fleet
is owned and maintained, serviced
and certified yearly by manufacturer
recognised companies.**



OUR ENVIRONMENTAL RESPONSIBILITY

Our innovative approach is the driving force for our consistent improvement



Datalec recognises the significant impact that our services can have on the environment and, rather than only achieving legal compliance, we actively try to protect the environment by promoting sustainable use of natural resources, preventing environmental pollution, participate vigorously in waste minimisation and implement best practice to reduce our impacts. We actively pursue the advantages we believe our approach offers our clients, employees, and our communities.

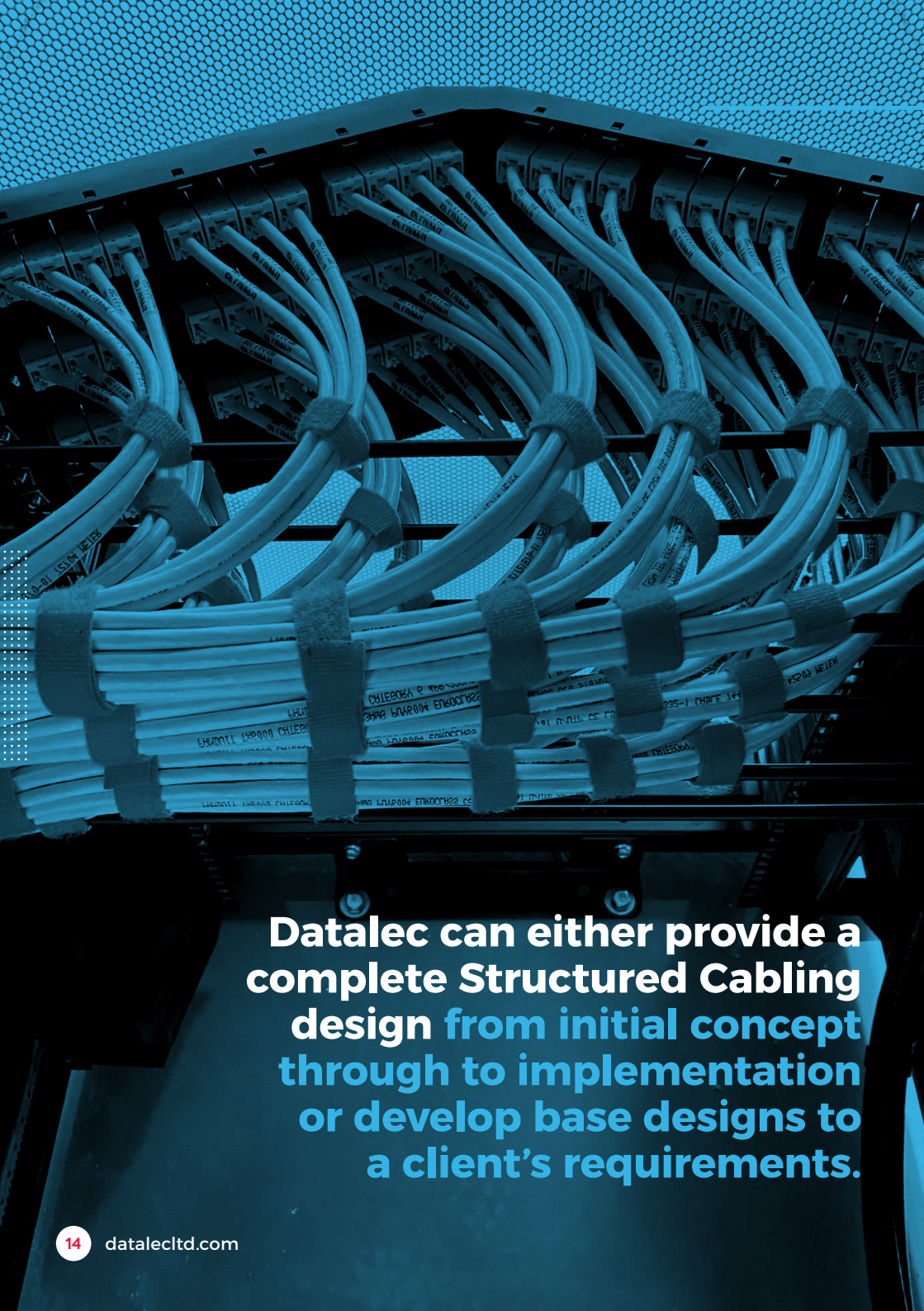
By utilising our off-site pre-term facility, we can manage quality more efficiently and our resources in a controlled environment. Additionally, a pre-termination solution provides further benefits by reducing installation time, reliance on larger pools of resource, which in turn contributes towards mitigating considerations when managing on-site health and safety.

Other benefits from our pre-termination facility offer the opportunity to manage waste and CO² emissions. Datalec can segregate waste packaging, and where practical, repurpose the packaging for onward use. In compliance with waste

regulations, surplus waste is placed into dedicated skips enabling controlled disposal using appropriate services that provide transfer waste notices, (WTN) and a facility registration certificate. With reduction of waste in transit, this also reduces the need for large vehicles and multiple deliveries which acts as an aid in lowering CO² emissions.

Datalec is continuously looking at ways across our business to reduce our carbon footprint and become more sustainable. We believe this will become more critical as the world focuses on the wider issues.

Environmental Management and Sustainability are an integral part of our philosophy and delivery process. We continuously drive for improvement.



Datalec can either provide a complete Structured Cabling design from initial concept through to implementation or develop base designs to a client's requirements.

Bespoke data centre solutions tailored to your specific needs

Service offering includes:

Critical Infrastructure

- MEP Design and Construction.
- White and Grey Space Fit-Out.
- Technical Fit-Out.
- Connectivity.
- Electronic Security Solutions.

Managed Services

- Intelligent Hands.
- Migrations.
- Data Destruction.
- Technical and Critical Environment Cleaning.
- Customer Portal.

Data Hall Manufacturing

- Aisle Containment.
- Caging Solutions.
- On-Site Powder Coating Facility.

Consultancy Services

- Project Management.
- Programme/Portfolio Management.

OUR COMMITMENT TO QUALITY AND INNOVATION

Self-delivery is Datalec's commitment to providing the quality, consistency, and common exacting standards in workmanship that clients deserve and demand.

Constantly
in **the pursuit**
of **perfection**

Structured Cabling Services



DATALEC
PRECISION INSTALLATIONS

☎ +44 (0) 800 689 1318

🌐 datalecltd.com

✉ info@datalecltd.com

📍 **Datalec Precision Installations**

Milton House
Buntingford Business Park
Baldock Road
Buntingford
Hertfordshire
SG9 9ER