



**DATALEC**  
PRECISION INSTALLATIONS

# Aisle Containment and Caging Solutions

[datalecltd.com](http://datalecltd.com)

# SECURITY CAGES

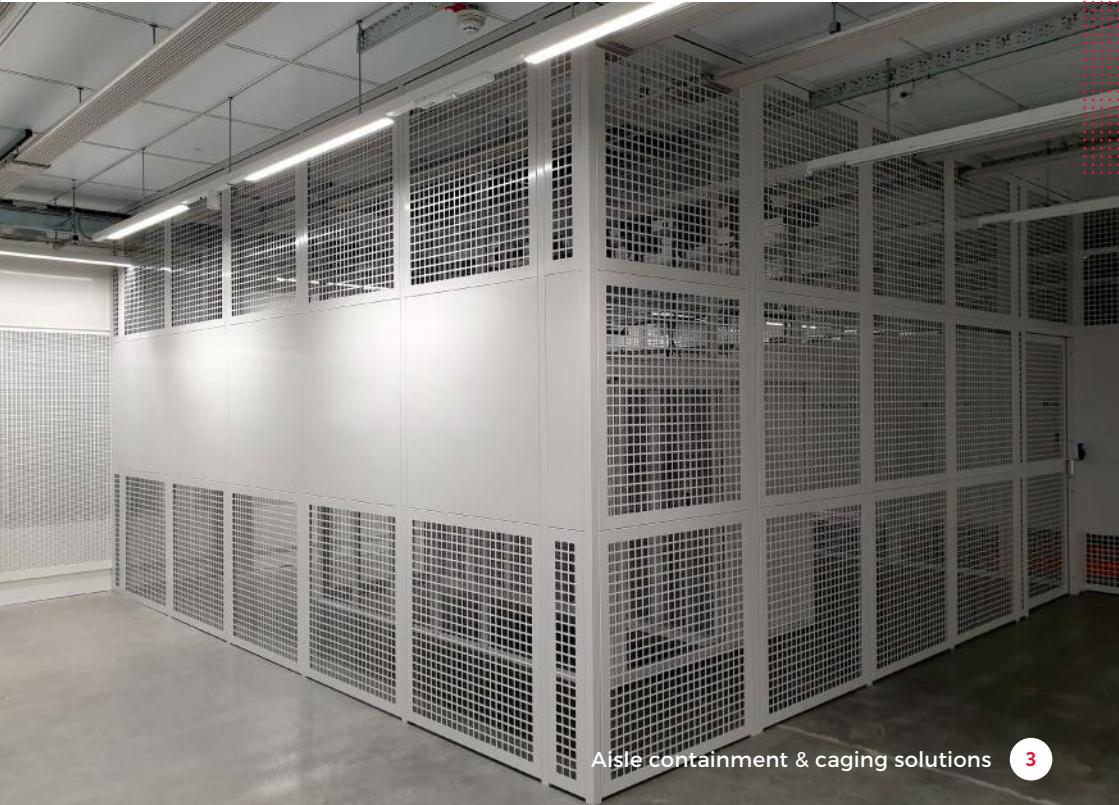
IT equipment and data security is an ongoing concern for Data Centre managers as IT systems continue to play an ever more critical role in daily operations. A standard server cabinet locking mechanism is often not enough to satisfy a Data Centres' security requirements. For this reason, Datalec has designed security cages that ensure optimum safety at all times.



**Secure  
containment,  
storage &  
staging**

## Cage Wall

<b>Steel:</b>	1.5mm (standard). Options of 2.0mm, 2.5mm and 3.0mm are available
<b>Punched Holes:</b>	12.7, 19, 25, 33, 38, 45 mm square. 1- 3mm rounded corners other hole patterns and sizes are available on request
<b>Height:</b>	Available to a height of 8.0m
<b>Cage Frame:</b>	50mm x 50mm x 1.5mm Box Section. Options of 2mm and 3mm are available
<b>Fixings:</b>	M6 Machine Screws, M6 Nylock Nuts, 5.5 x 25mm Tek screws. Security fixings available on request



# Underfloor Barrier

<b>Steel:</b>	1.5mm (standard). Options of 2.0mm, 2.5mm and 3mm are available
<b>Punched Holes:</b>	12.7, 19, 25, 33, 38, 45 mm square, 1-3mm rounded corners; other hole patterns and sizes are available on request
<b>Fixings:</b>	M6 Machine Screws, M6 Nuts, 5.5 x 25mm Tek screws. Security fixings available on request





## Cage Roof

<b>Steel:</b>	1.5mm (standard). Options of 2.0mm, 2.5mm and 3.0mm are available
<b>Punched Holes:</b>	12.7, 19, 25, 33, 38, 45 mm square, 1-3mm rounded corners other hole patterns and sizes are available on request
<b>Roof Support:</b>	50mm x 50mm x 2.0mm Box Sections or Channels. In some instances, vertical supports will be needed
<b>Fixings:</b>	M6 Machine Screws, M6 Nylock Nuts, 5.5 x 25mm Tek screws. Security fixings available on request



## Doors

<b>Steel:</b>	Sliding or Hinged
<b>Size:</b>	900mm - 2400mm wide, 2000mm - 2900mm high
<b>Locks:</b>	Key, electromagnetic, mechanical code locks, emergency exit hardware, electromechanical (Abloy EL 560/561)
<b>Fixings:</b>	M6 Machine Screws, M6 Nuts & 5.5 x 25mm Tek screws. Security fixings externally
<b>Lead Time:</b>	Delivery is 2-3 weeks from receipt of order with installation the following week

# Secure Louvre

Louvre Partitions  
and Panels:

Aluminium or Steel Louvres (up to 70% free area)  
Perforated steel panels fitted for additional security

Single and double bank blades options

## Mission critical data centre installations



# AISLE CONTAINMENT

---

Hot Aisle and Cold Aisle Containment systems offer considerable savings in energy costs by separating airflows; this optimises efficiency whilst also reducing the risk of re-circulation and bypass airflow.

**Improve  
Power Usage  
Effectiveness  
(PUE)**



# CAC Roof

## Drop Down Panels:

Can be used in Data Hall with sprinkler fire suppression systems and eliminates the need to modify or extend fire suppression sprinklers.

### Heat Reactive FM Global Approved Plastic

- Support and cross brackets are adjustable to allow installation of different size panels (adjustable to the different aisles length and width)
- Available for installation on any cabinet type and size

## Fixed Panels:

Flexible, modular design, adjustable to different aisle lengths and widths. Can be retrofitted on any cabinet type and height

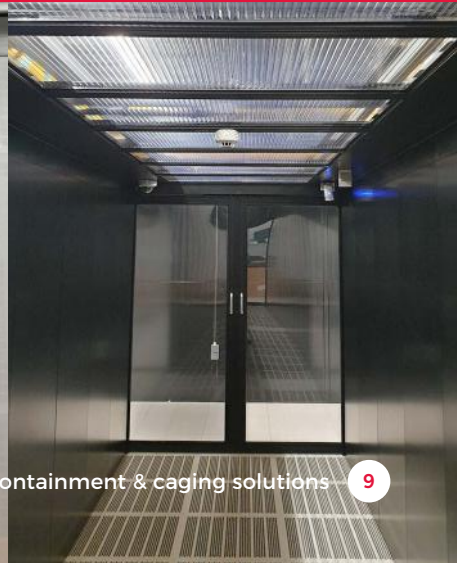
## Sliding Roof Panels:

- Easy access to overhead services and light fittings
- Available for installation on any cabinet type and size

## Active Roof Panels:

Active Roof panels are integrated with DC fire suppression system and open automatically during a fire alarm event to allow access of gas or water mist suppressant inside contained aisles.

Electromagnets hold active roof panels closed during normal operation and in the event of an alarm, release roof panels to swing open.



## Doors

<b>Bi-sliding:</b>	<ul style="list-style-type: none"><li>- 1200, 1800 or 2400mm wide with or without lock self-closing with speed control and soft close</li><li>- Aluminium frame (anodised or powder coated finish)</li><li>- 4mm Polycarbonate or Toughened Glass vision panels</li><li>- Door coordination option available</li></ul>
<b>Single sliding:</b>	<ul style="list-style-type: none"><li>- 900 or 1200mm wide</li><li>- Self-closing with speed control and soft close</li><li>- Aluminium frame (anodised or powder coated finish)</li><li>- 4mm Polycarbonate or Toughened Glass vision panel</li></ul>
<b>Hinged:</b>	<ul style="list-style-type: none"><li>- 900 or 1200mm wide</li><li>- Self-closing with speed control and soft close</li><li>- Aluminium frame (anodised or powder coated finish)</li><li>- 4mm Polycarbonate or Toughened Glass vision panel</li></ul>
<b>Cage CAC door (secure containment):</b>	<ul style="list-style-type: none"><li>- Sliding or hinged doors can be supplied with a variety of locks such as electro-magnetic (can be integrated into existing access control system or stand-alone), key operated locks etc.</li><li>- Vision panels provide sufficient lighting inside the aisle without security being compromised</li></ul>
<b>All doors are:</b>	Suitable for installation on any cabinet type and size. Available in anodised aluminium or powder coated finish in variety of colours

**Our rigorous project management and supervision ensures solutions are implemented the first time, every time**





## Increase the efficiency of cooling by up to 30%

### Hot Aisle Containment:

---

Hot Aisle Containment channels the naturally rising hot exhaust air created by servers directly into a ceiling void or CRAC/CRAH system intake. This containment method prevents hot air from recirculating and mixing with the air supply, increasing the efficiency cooling by up to 30%.

## Roof Chiller Containment

---

Aisle containment principles can be applied to other vital data centre systems to increase cooling efficiency. Cold Aisle Containment solution can be modified for exterior use and used to segregate cold intake air from hot exhaust air.

## Improves PUE in your data centre



# On-Site Powder Coating Facility

The introduction of our on-site powder coating facility brings together the core characteristics of Datalec, of being agile, efficient and precise. The ability to have complete control over the process means that we have better quality control and shorter lead times leading to better efficiency. It also means we are able to use the most up-to-date technological process that enables us to deliver an environmentally responsible product due to its green credentials.



4

4 guns fully automated paint booth, with additional stand alone bay

60

60 standard colours available, all others available on request

164

164m conveyor track length including 15m of pre-treatment, 15m of drying oven and 35m curing oven.

1.5

1.5 hrs track time

40

40 x standard 1200mm x 1200mm panels per hour spray capacity



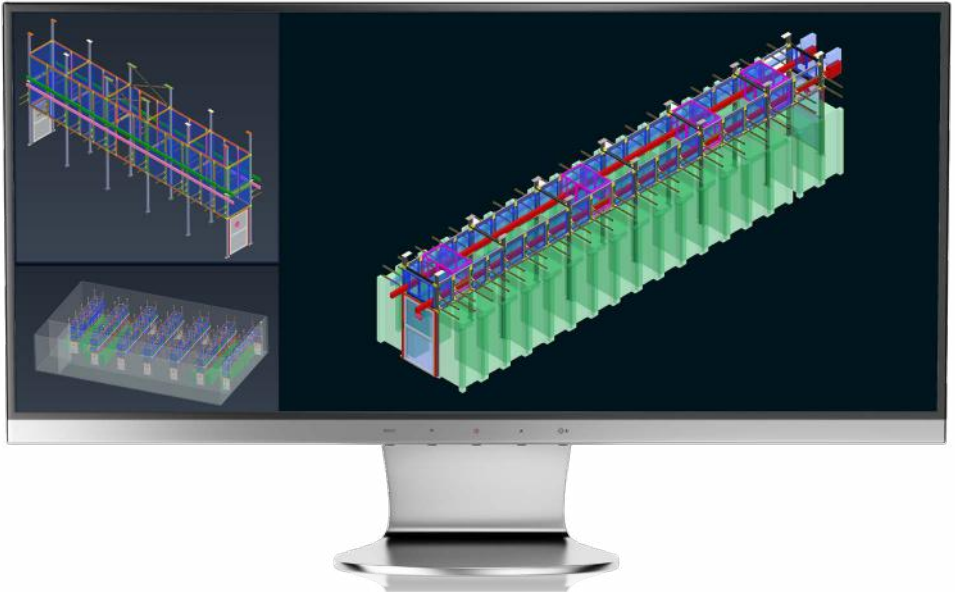
## HIGHLY SUSTAINABLE

- Green process system due to using close circuit plaporization pre-treatment which **produces zero chemical waste**
- Powder recycling improves efficiency and CO2 reduction and **reduces waste by 90%**



## Freestanding Aisle Frame

---



Datalec's freestanding aisle frame provides a simple and efficient method for the deployment of infrastructure support and aisle containment.

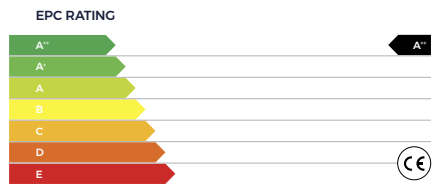
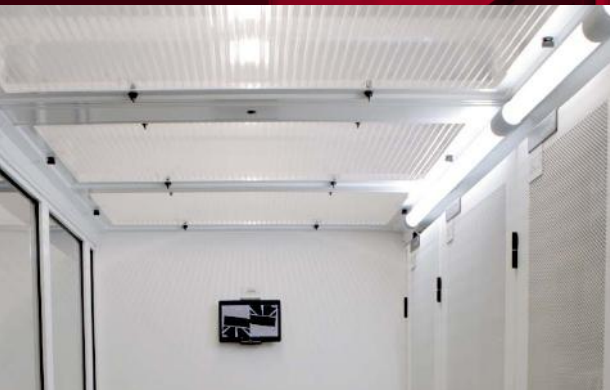
Designed to provide a complete system solution that combines the key components of containment, cable and power pathways, and cabinet docking into a single modular structure, it enables mission-critical facilities to build and scale data centres quickly and efficiently.

---

**Our innovative approach**  
**is the driving force for our**  
**consistent improvements**

# Datalec LED Luminaire

Datalec LED Luminaire is a lighting system with low power consumption and minimal heat generation, providing long term affordability. These standalone, modular design, lights can be easily installed with new HAC/CAC or retrofitting into exiting PODs of any length. Manufactured in the UK and designed to meet the TIA-942-A Standard for data centre lighting controls.





# Service Offering Includes

---

## Critical Infrastructure

- MEP Design and Construction.
- White and Grey Space Fit-Out.
- Technical Fit-Out.
- Connectivity.
- Electronic Security Solutions.

## Managed Services

- Intelligent Hands.
- Migrations.
- Data Destruction.
- Technical and Critical Environment Cleaning.
- Customer Portal.

## Data Hall Manufacturing

- Aisle Containment.
- Caging Solutions.
- On-Site Power Coating Facility.

## Consultancy Services

- Project Management.
- Programme/Portfolio Management.

## OUR COMMITMENT TO QUALITY AND INNOVATION

---

Self-delivery is Datalec's commitment to providing the quality, consistency, and common exacting standards in workmanship that clients deserve and demand.



Constantly  
in **the pursuit**  
of **perfection**

# ABOUT DATALEC

---



Datalec Precision Installations have been instrumental in delivering structured cabling projects in the data centre and technology industry since 2012. Datalec's reputation has been built on offering its client base an agile, reliable, and precise service.

With an established reputation built on quality, flexibility, and reliability Datalec constantly seeks how to better meet and exceed client expectations.

The company holds various industry certifications and accreditations. Through careful recruitment and rigorous training Datalec's critical industry qualifications and partner programs are well maintained.



QUALITY  
MANAGEMENT



ENVIRONMENTAL  
MANAGEMENT



HEALTH  
& SAFETY  
MANAGEMENT



I'm sure this won't be the last time we work with Datalec, **I will be looking forward to the next project**





**DATALEC**  
PRECISION INSTALLATIONS

☎ **+44 (0) 800 689 1318**

🌐 **datalecltd.com**

✉ **info@datalecltd.com**

📍 **Datalec Precision Installations**

Milton House  
Buntingford Business Park  
Baldock Road  
Buntingford  
Hertfordshire  
SG9 9ER

Designed and Manufactured in the UK